

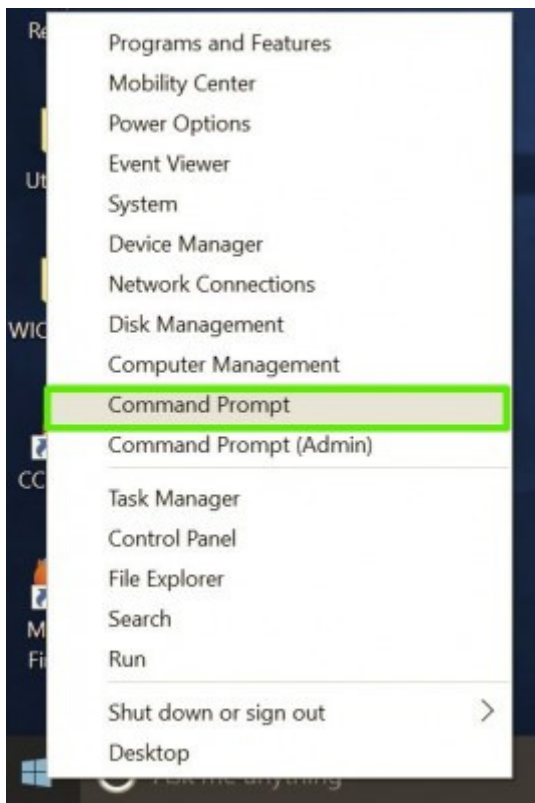
How to Find Your MAC Address in Windows 10

The Media Access Control (MAC) address is a unique 12-character identifier (e.g. **00:00:00:00:00:0X**) for a specific piece of hardware, like the network adapter located in WiFi devices.

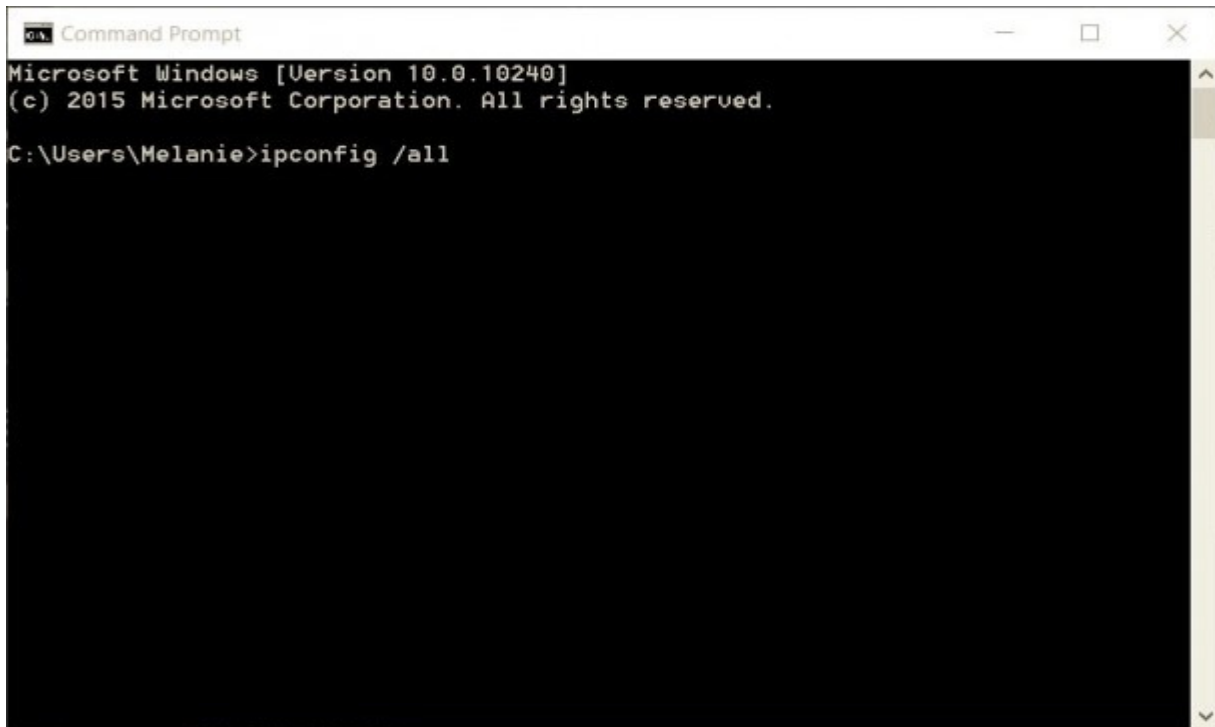
The quickest way to find the MAC address is through the command prompt; however, there is a 2nd method listed later in this document using Network Connections Settings.

How to Find Your MAC Address with the Command Prompt

1. **Open the command prompt.** Right-click on the Start button and select **Command Prompt** from the menu.



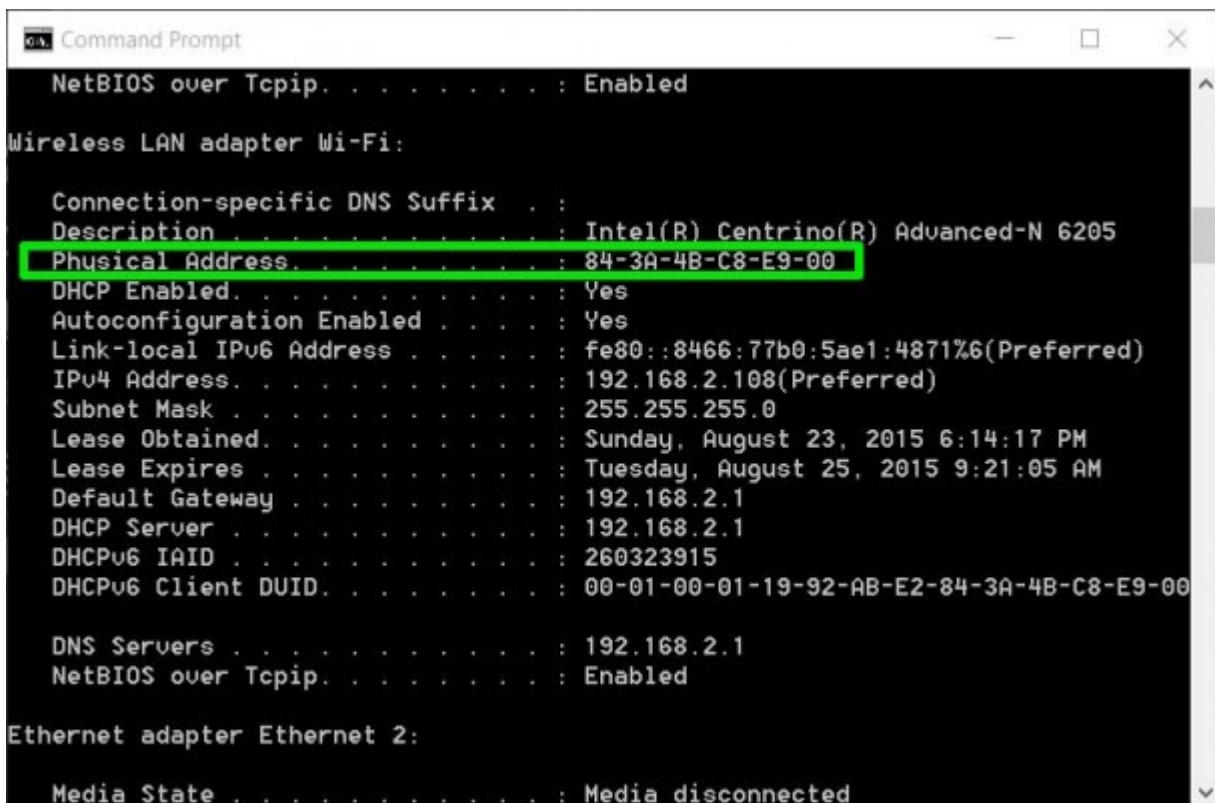
2. Type in **ipconfig /all** and press Enter. This will display your network configuration.



```
Command Prompt
Microsoft Windows [Version 10.0.10240]
(c) 2015 Microsoft Corporation. All rights reserved.

C:\Users\Melanie>ipconfig /all
```

3. Find your adapter's physical address. Scroll down to your **Wireless LAN adapter Wi-Fi** and look for the values next to "**Physical Address**," which is your MAC address.



```
Command Prompt

NetBIOS over Tcpip. . . . . : Enabled

Wireless LAN adapter Wi-Fi:

    Connection-specific DNS Suffix . :
    Description . . . . . : Intel(R) Centrino(R) Advanced-N 6205
    Physical Address. . . . . : 84-3A-4B-C8-E9-00
    DHCP Enabled. . . . . : Yes
    Autoconfiguration Enabled . . . . : Yes
    Link-local IPv6 Address . . . . . : fe80::8466:77b0:5ae1:4871%6(Preferred)
    IPv4 Address. . . . . : 192.168.2.108(Preferred)
    Subnet Mask . . . . . : 255.255.255.0
    Lease Obtained. . . . . : Sunday, August 23, 2015 6:14:17 PM
    Lease Expires . . . . . : Tuesday, August 25, 2015 9:21:05 AM
    Default Gateway . . . . . : 192.168.2.1
    DHCP Server . . . . . : 192.168.2.1
    DHCPv6 IAID . . . . . : 260323915
    DHCPv6 Client DUID. . . . . : 00-01-00-01-19-92-AB-E2-84-3A-4B-C8-E9-00

    DNS Servers . . . . . : 192.168.2.1
    NetBIOS over Tcpip. . . . . : Enabled

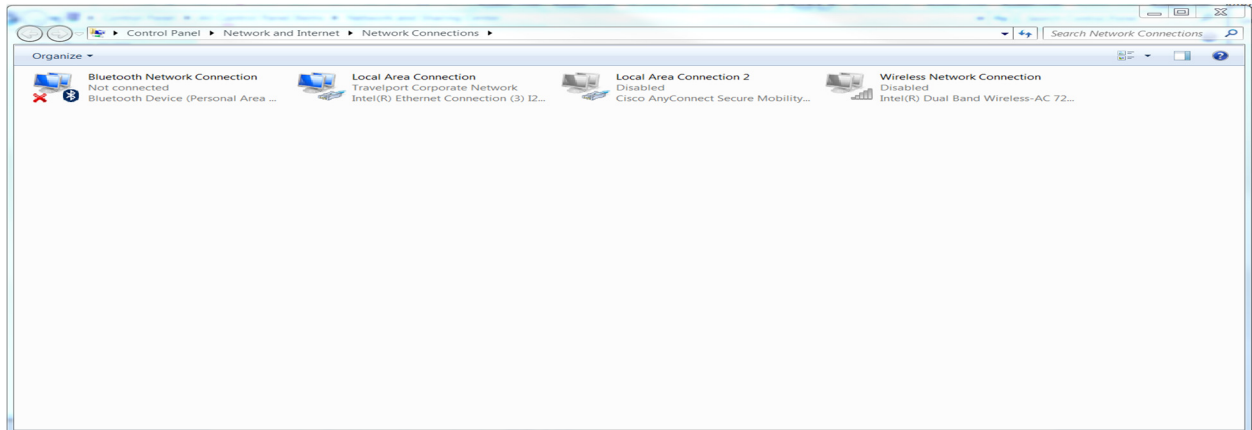
Ethernet adapter Ethernet 2:

    Media State . . . . . : Media disconnected
```

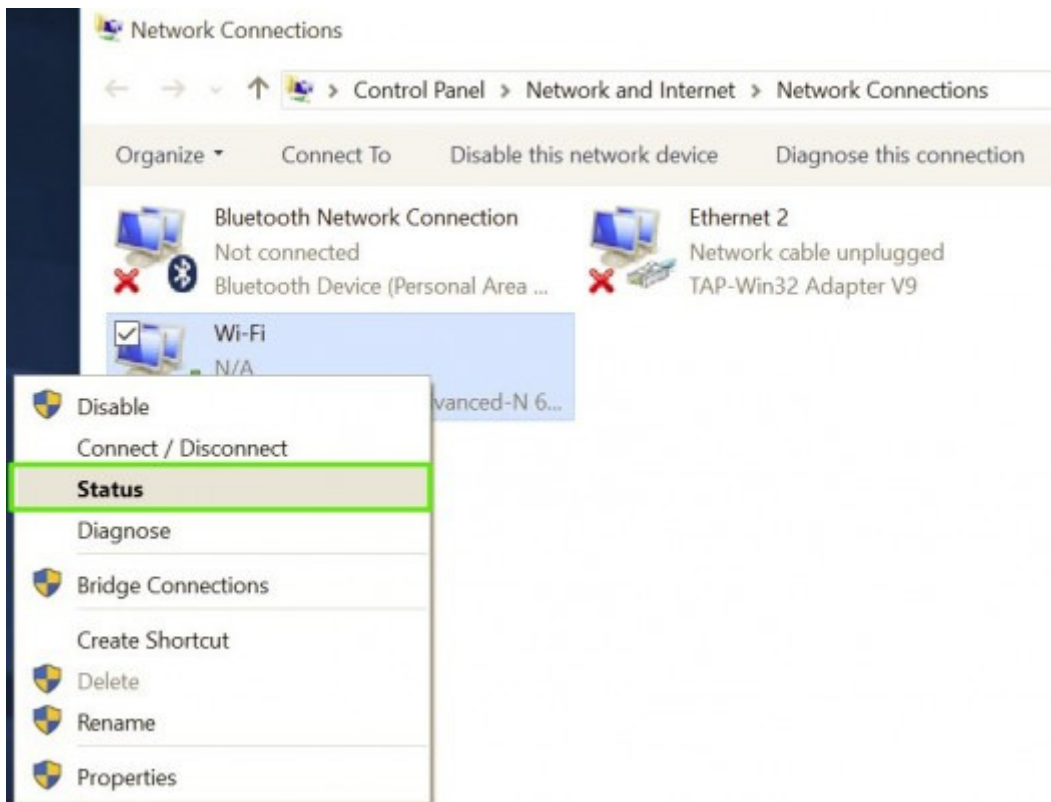
How to Find Your MAC Address in the Network Connection Settings

You can also find the MAC address by looking at the details of your network adapter in Windows.

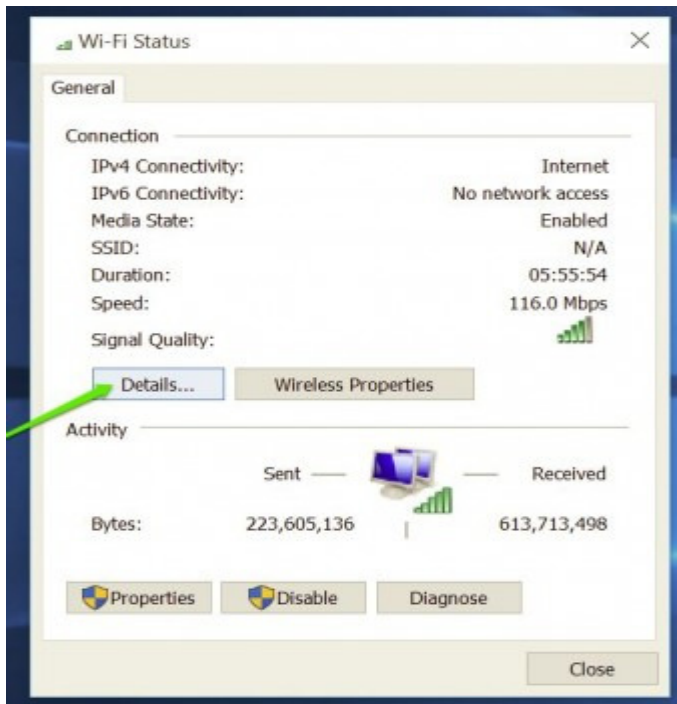
1. Search "**network connections**" in the taskbar and select "**View network connections.**" (Or navigate to Control Panel > Network and Internet > Network Connections)



2. Right-click on your **Wireless Network Connection** and select "**Status.**"



3. Click the "**Details**" button.



4. Locate the **Physical Address**. The value for the physical address in the Network Connection Details window is your MAC address.

